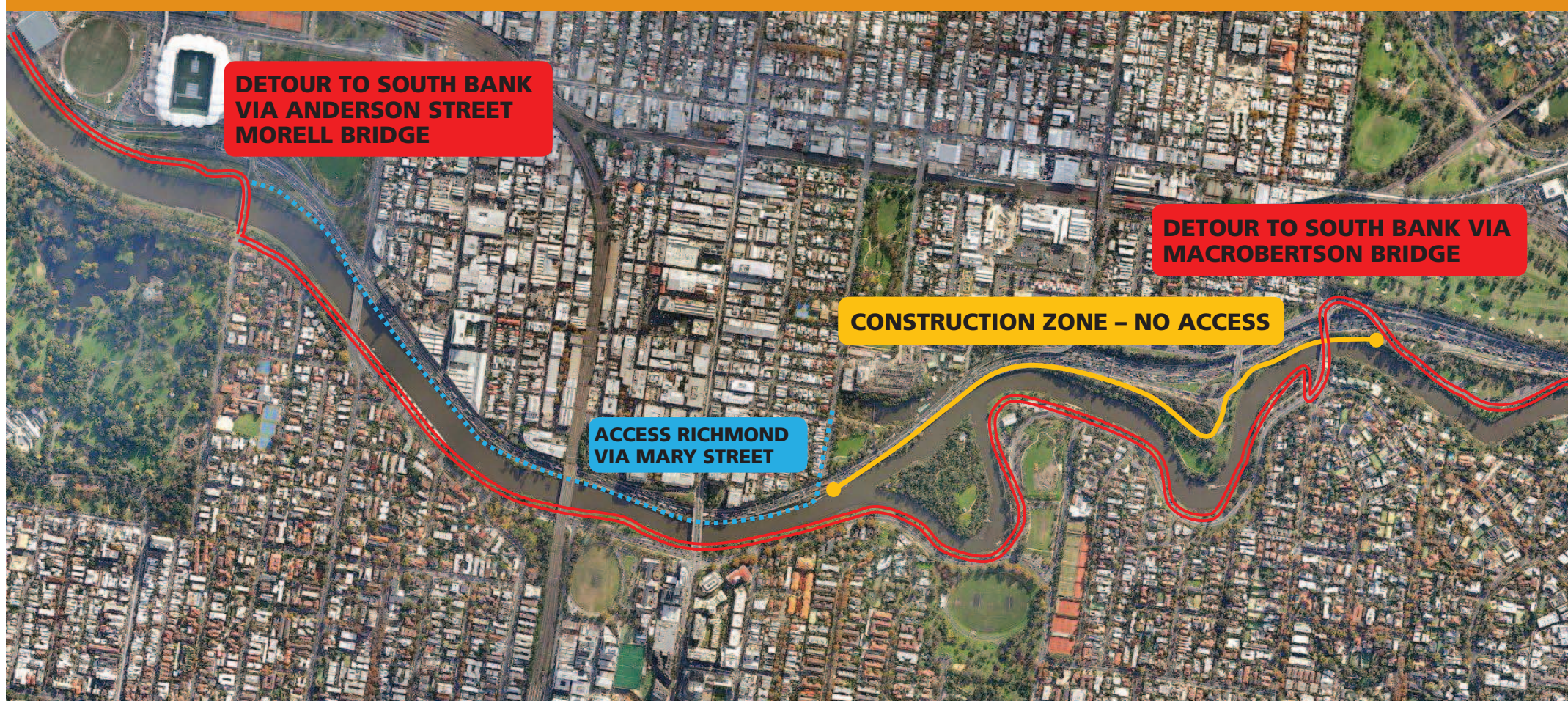


# MAIN YARRA TRAIL RECONSTRUCTION WORKS

A section of the Main Yarra Trail between MacRobertson Bridge and Burnley Harbour will be closed from  
**Monday 15 September 2014**



From 15 September, 2014, Council will commence the reconstruction of the Main Yarra Trail, between MacRobertson Bridge and Burnley Harbour (Melway Map 2M, Ref C1 to Melway Map 2H, Ref G12).

The project involves widening the path to improve amenity for users and will cost about \$350,000, fully funded through Yarra City Council's Open Space Capital Works Program.

The works are expected to take six weeks to complete and during that

time there will be no access for path users. Pedestrians and cyclists will be required to detour around the site via the shared trail on the south bank of the Yarra River – see map.

The existing asphalt path will be demolished and replaced with a wider reinforced concrete path. A small section of path has been constructed at Loys Paddock (Melway Map 2F, Ref F1) to demonstrate the standard of the new path.

For your safety and the safety of contractors, please keep out of the works zone. Trespassers may cause damage that will require additional work and cause delays.

Please report suspicious activities to police via 000.

Please direct your questions, comments and suggestions to Mark Donnellan, Capital Works Projects Officer, phone 9205 5724 or email [mark.donnellan@yarracity.vic.gov.au](mailto:mark.donnellan@yarracity.vic.gov.au).