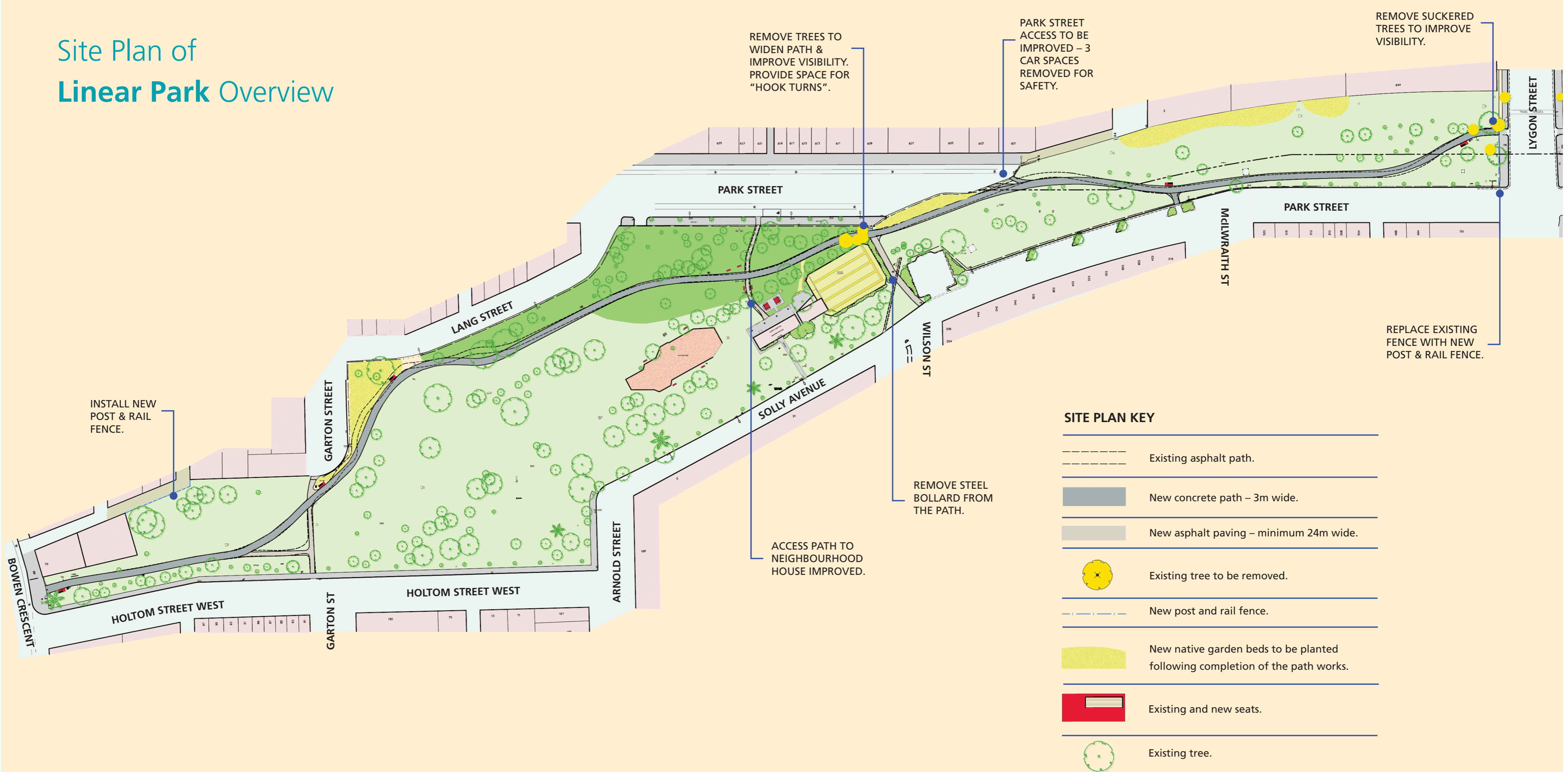


Path improvement works overview

Site Plan of Linear Park Overview



Works to improve the section of shared path in **Linear Park** between Lygon Street and Bowen Crescent are expected to begin in mid April.

The works are expected to take six to eight weeks to complete.

Please note, during this time pedestrians and cyclists will not have access to this section of the path.

Signage will direct cyclists and pedestrians to alternate routes, including north and south crossing points.

The path upgrade will involve replacing the asphalt path with a concrete path, and widening it to three metres.

The path will follow the existing alignment, with minor adjustments. Some trees will be removed to provide adequate width and provide better visibility for path users.

Council has already planted 40 new native trees in this part of Linear Park to offset the tree removals.

Three parking spaces will be removed from Park Street (east end of the north section), to improve access to Linear Park. This is required to make this intersection safe for park users.

These works are part of the implementation of the Linear Park Masterplan (2006), and consistent with recent improvements in other sections of the park.

For more information, please contact **Kevin Ayrey** on **9205 5770**, or email **Open Space@yarracity.vic.gov.au**